

YORK®

Water-Cooled Chillers

(All chillers are electric-drive and use refrigerant HFC-134a unless otherwise noted *)

CAPACITY

MODEL and DESCRIPTION

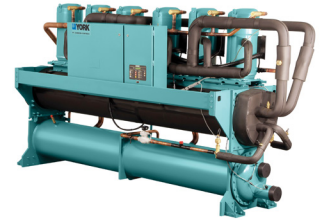
50 - 200 TR
175 - 700 kW

Model YCWL - scroll compressor *

Refrigerant: HFC-410A

Unique Features: heat-pump capability (non-reversing type), standard BAS communications, brine to 15°F (-9°C), remote-condenser option, reduced Minimum Circuit Ampacity option

Ideal Applications: comfort cooling and process / industrial cooling



125 - 300 TR
440 - 1,055 kW

Model YVWA - VSD screw compressor

Unique Features: variable-speed drive, high-head capability, 30% less refrigerant, hybrid falling-film evaporator

Ideal Applications: comfort and process cooling, glycol chilling, heat recovery, and heat pump



120 - 1,380 TR
420 - 4,850 kW

Model YIA - low-pressure steam / hot-water absorption *

Refrigerant: water

Unique Features: OptiView™ control panel

Ideal Applications: sites with waste heat or limited electricity



200 - 700 TR
700 - 2,460 kW

Model YPC - high-pressure steam / oil / gas absorption *

Refrigerant: water

Unique Features: simultaneous cooling and heating

Ideal Applications: sites with waste heat or limited electricity



YORK®

Water-Cooled Chillers

(All chillers are electric-drive and use refrigerant HFC-134a unless otherwise noted *)

CAPACITY

MODEL and DESCRIPTION

210 - 600 TR
740 - 2,110 kW

Model YMC² - magnetic centrifugal compressor

Unique Features: 30% less refrigerant, 73 dBA, OptiView™ control panel, OptiSound™ control, OptiSpeed™ variable-speed drive

Ideal Applications: comfort cooling, facilities requiring low sound levels, green / LEED® buildings



250 - 3,000 TR
880 - 10,550 kW

Model YK - centrifugal compressor

Unique Features: OptiSpeed™ variable-speed drive, heat-recovery capability, quick start feature, OptiSound™ control, OptiView™ control panel

Ideal Applications: comfort cooling, heat-recovery sites, data centers

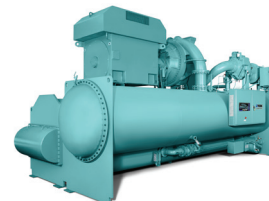


2,500 - 3,500 TR
8,800 - 12,300 kW

Model YK-EP - centrifugal compressors with economizer

Unique Features: higher efficiency at design and off-design conditions, OptiSpeed™ variable-speed drive, single control panel

Ideal Applications: district cooling, process / industrial cooling, data centers, turbine inlet-air cooling

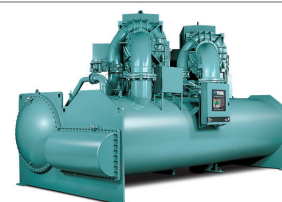


1,500 - 6,000 TR
5,300 - 21,100 kW

Model YD - dual centrifugal compressors

Unique Features: smallest footprint per cooling ton in the industry, single OptiView™ control panel

Ideal Applications: district cooling, retrofits, building additions

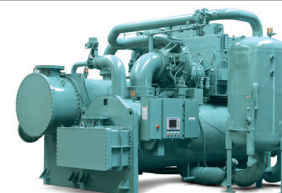


300 - 2,500 TR
1,050 - 8,800 kW

Model CYK - compound centrifugal compressors

Unique Features: high-head and heat-pump capability

Ideal Applications: air-cooled condensing, brine chilling, heat pump, and process / industrial cooling

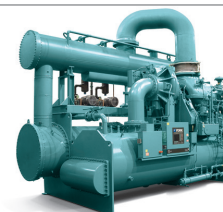


700 - 2,800 TR
2,460 - 9,850 kW

Model YST - steam-turbine-drive centrifugal compressor *

Unique Features: packaged steam condenser, automatic start-up, OptiView™ control panel

Ideal Applications: co-generation, hybrid plants



3,000 - 5,500 TR
10,550 - 19,350 kW

Titan Model OM - centrifugal compressor with electric-motor, steam-turbine, or gas-engine drive *

Unique Features: flexibility, longest life expectancy, easily retrofitted

Ideal Applications: district cooling, air-cooled condensing, brine chilling, heat pump, and process / industrial cooling

